

EMPLEX SYSTEMS INC.

The Bagging Solutions Company



*MPS 6300 & 6700 Validatable Series
Rotary Heat Sealers*

CONTINUOUS EVOLUTION

For more than a quarter of a century, Emplex has proven itself the leader in the development of validatable heat sealing equipment. Working closely with our customers, we have listened and learned, gaining the knowledge necessary to continually evolve and stay at the forefront of our industry. The MPS Series band sealers are the culmination of our experience. Designed to benefit the production process, the MPS series increases ease of use, decreases downtime, and creates utmost flexibility. The modularity of the MPS 6300/6700 series allows for options that maximize production efficiency, particularly in medical and pharmaceutical industries or other environments requiring validation.



MPS 6300 Validatable Series

As the base model of the series, the MPS 6300 boasts a wide range of standard features and capabilities that are intrinsic to each and every model in the MPS 6300/6700 series. These continuous feed, variable speed machines include: one pair of air pressurized, digitally controlled heater bars; one pair of air flow, air pressurized cooling bars; a PID autotune temperature controller; and a digital tachometer. A fully digital control panel is comprised of temperature, pressure and tachometer controllers, and a safety interlock switch turns the machine off when the control panel is opened. An internal switch turns off the front heater bars improving the sealing of Tyvek pouches. Calibration may be completed at our facility or by the customer. All seals are created using economical etched Teflon bands which maintain high seal quality and produce consistently strong, clean seals on all heat sealable bags.

Validation Control

The MPS Series sealers have two control system packages to match your particular validation needs.

(1) Basic Control Package

Audio alarms for heat, speed, and pressure, an auto-reverse feed on motor, an external J-type thermocouple jack.

(2) VCS11607 Control Package (Optional)

This separate control system is fitted in a Nema 4 control box and includes 3 closed loop temperature controllers, 1 closed looped speed control, and 1 closed looped air pressure control. All are digital systems, monitoring to a tenth of a degree, p.s.i., and inches per minute. Also included are 5 external J-type thermocouple jacks (3 heat and 2 cool), a reverse feed on motor, and a red light alarm for out of tolerance parameters. A multi-wire cable connects the sealer and the control system for easy maintenance.

Add-On Versatility

A number of add-on options modify and enhance the sealing functionality of this series. These options include: trimmers, printers, embossers, conveyors, perforation units and more. This add-on principle means you can adapt any of these options to the sealing unit at any time—even after the purchase to accommodate changing production needs—making the MPS series the most versatile sealing machine line available.

Minimized Seal to Product Distance

MPS Series machines reduce empty space found between the product and seal to its smallest physical limit, thereby reducing bag wastage, increasing shipping volume, and enhancing product appearance.

Increased Support Capability

Emplex's exclusive infeed system is capable of supporting significant bag weights without the use of a conveyor. Typically, the MPS can support a 10" wide bag containing 2 pounds of product. More weight can be supported with wider bags, and less weight is supported as the bag narrows. For bags that require greater support, a conveyor can be readily and simply added to the unit (i.e. the MPS 6700 series).

Fast Routine Maintenance

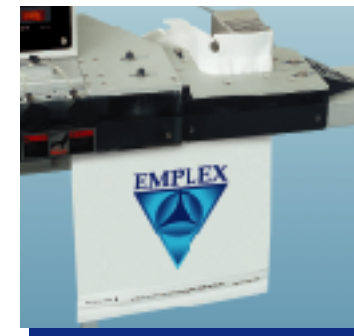
When sealing bands need to be replaced, Emplex's unique design offers quick and easy change-over. No tools are required and it takes about a minute to change—without the need of a technician! Easy access to the sealer's internal components and simple dis-assembly keep routine maintenance to a minimum.

Unique Stand Design

This robust anodized aluminum stand is as functional as it is durable. Built conveyor-ready, the corrosion-resistant stand easily and infinitely adjusts the sealing head and conveyor heights to suit your specific bag sizes.

MPS 6700 Validatable Conveyorized Series

The MPS 6700 series is the conveyorized mate to the 6300 series and is required for bag weights greater than 2 pounds or for particular product orientation. All conveyors are stainless steel, food grade belt conveyors complete with adjustable guide rails. Standard conveyor size is 6" W x 6' L, with a full family of conveyor options and sizes available to meet your specific needs. MPS conveyors are effortlessly mounted directly to the floor stand. Easy to adjust with a dependable latch mechanism, MPS conveyors are manually raised and lowered to match any size bag.



MPS 6310 & MPS 6710

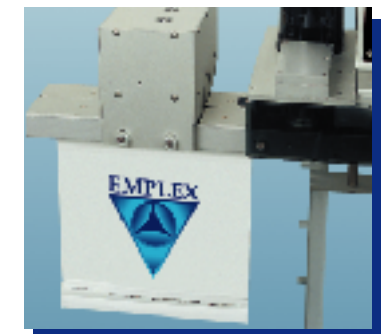
The MPS 6310 and MPS 6710 are equipped with the front-end TR60 bag top trimmer. This unit is easily and quickly removed for servicing or non-trimmed sealing. Its blade is height adjustable for accurate trim positioning, and can be set to eliminate the "tail" produced above the seal (perfect for shrink bags). Scrap is positively removed by our trim belt system, so there is no need for fan blowers or vacuum systems.

MPS 6320 & MPS 6720

The MPS 6320 and MPS 6720 are equipped with the ER60 emboss coder. The ER60 holds up to 8 characters of standard type and 13 characters of slim type, and is available in single line or double line versions.

MPS 6330 & MPS 6730

The PR60 ink printer is standard on the MPS 6330 and MPS 6730. Capable of holding up to 17 or 23 characters per line (depending on character and wheel sizes), this printer features adjustable type pressure and comes in single, double, or triple line versions. A range of ink colors are available upon request.



MPS 6340

Compact and portable, the MPS 6340 is the table-top version of the MPS 6300. Ideal for lightweight sealing applications (up to 8 oz.), an optional adjustable product shelf is offered for consistent loading and sealing performance.

MPS 6350 & MPS 6750

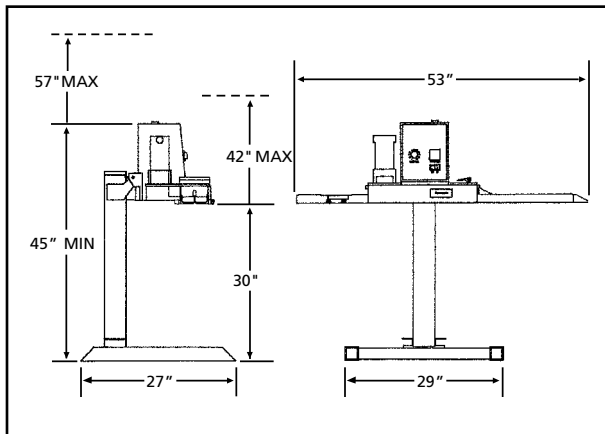
These models are fully equipped with both the TR60 trimmer and the PR60 ink printer.

MPS 6360 & MPS 6760

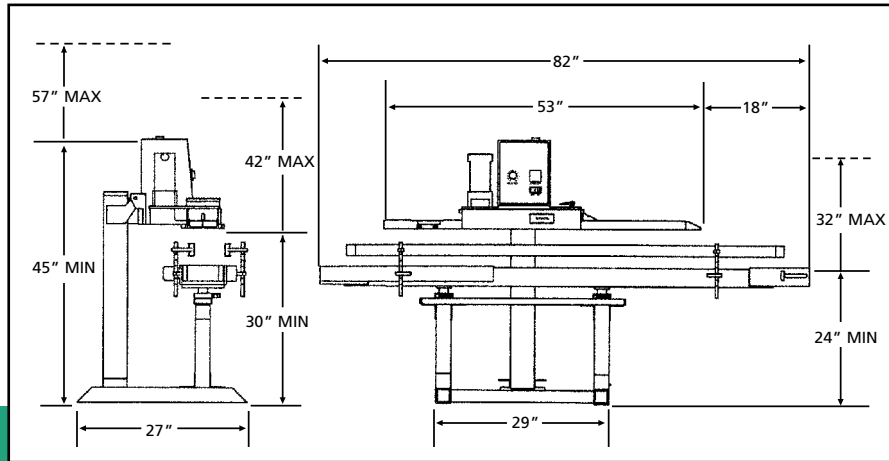
These models feature both the TR60 trimmer and the ER60 emboss coder.

DIMENSIONAL DRAWINGS

CAD drawings of the MPS Series in .DXF format are available upon request.



MPS 6300



MPS 6700

Technical Specifications of the MPS 6300 & 6700 Series

| | |
|-------------------------|--|
| Operation: | Manual, semi-, or fully-automatic adaptable |
| Controls: | Dependent on control system |
| Electrical: | 115 VAC, 1 PH, 60 Hz, 600 W, 6 amps |
| Air: | 30 PSI, 5 CFM |
| Motor: | Variable speed DC drive |
| Speed: | Variable up to 480" per minute |
| Temperature Controller: | PID Autotune temperature controller |
| Temperature Range: | 150 – 500 °F (65 – 260 °C) |
| Seal Width: | .3/8" |
| Sealing Bands: | Etched Teflon |
| Materials: | Anodized aluminum, stainless steel, and delrin |
| Weight: | Table-top unit: approx. 65 pounds Stand-alone unit: approx. 107 pounds Conveyorized unit: approx. 165 pounds |

CONTACT INFORMATION

For more information on our full product line or to receive an Emplex video please contact:
EMPLEX SYSTEMS INC., 2045 Midland Avenue, Toronto, ON, M1P 3E2

Telephone: 416-291-8085
Toll Free Line: 800-265-1775
Fax: 416-298-9949
Email: info@emplex.com
Website: www.emplex.com



Emplex Machinery Distributed By:

