

Retail Systems



MARLITE FINISH GUIDE - *RETAIL SYSTEMS FINISH COLLECTION*



retail systems finish



Marlite's
abstract series



_425 Terra



_782 Dapple



_426 Shadow



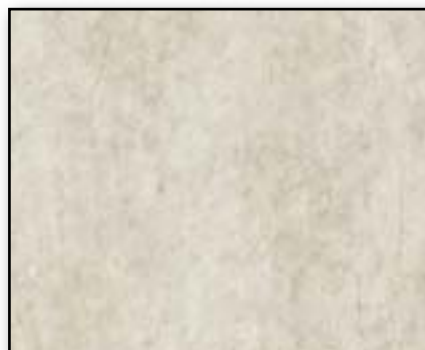
_429 Cloud



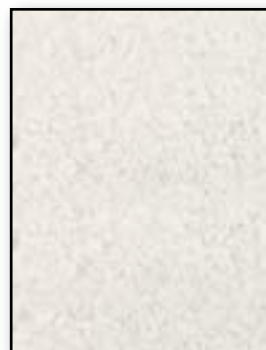
_453 Quarry



_192 Laramie



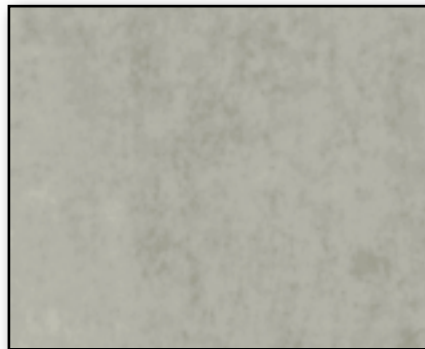
_193 Rawlins



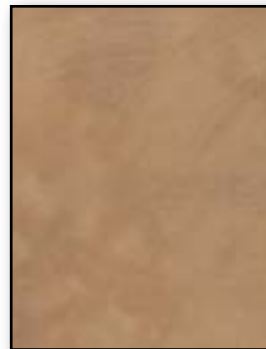
_134 Powder



_194 Cody



_198 Meriden



_438 Evening Lark

n collection



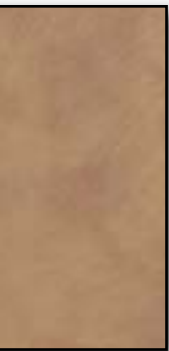
_451 Bone



_454 Flint



_437 Nimbus



_439 Horizon

Marlite's
woodgrain series



_205 Capistrano Cherry



_310 Sie



_317 Alum Rock Maple



_318 W



_319 Whittier Anigre



_342 Ch



_038 Georgetown Anigre*



_148 Mor

* Grain direction runs vertically on 4' wide x 8' high panel.



Terra Maple



Windsor Anigre



Champagne Maple



Monticello Anigre*

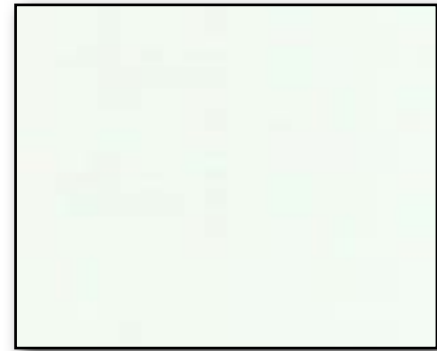
Marlite's
— mono finish series —



_703 Brite White



_418 Dawn Gray



_415 Frost White



_764 Crystal Gray

— select wood veneers —



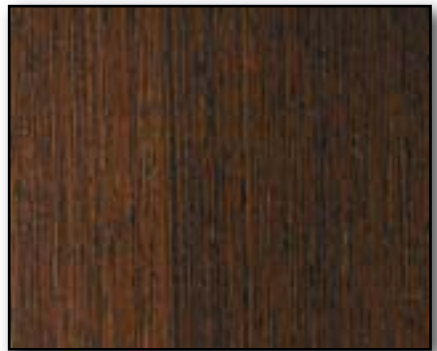
_256 Quartered Figured Anigre**



_299 Quartered Steamed Beech**



_265 Quartered Tigerwood**

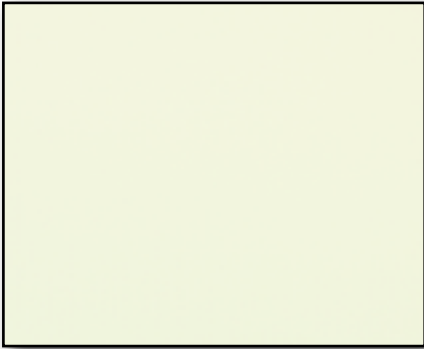


_263 Quartered Wenge**

** Grain direction runs vertically on 4' wide x 8' high panel. Inserts recommended for Display

Retail Systems

from Marlite



.515 Almond

- Marlite Finish prints are developed to match the most current trends in color and texture to meet the needs and requirements of the design community.
- Special colors and textures can be developed upon request.



specialty finishes

Retail Systems
from **Marlite**



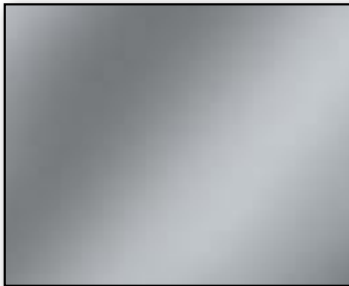
_020 Red Oak Veneer



_041 White Birch Veneer



_082 White Maple Veneer



_601 Clear Mirrored Acrylic



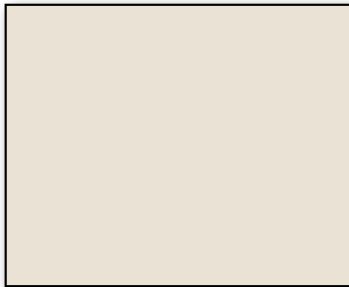
_750 Goshen White LPM



_738 Brushed Aluminum LPM



_742 Tornado Gray LPM



_744 Swiss Almond LPM



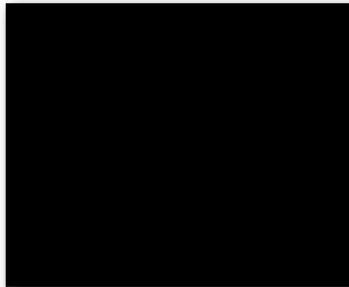
_692 Fine Oak LPM



_751 Stone Gray LPM



_711 Linn Birch LPM



_757 Trojan Black LPM



_707 Rock Maple LPM

groove insert colors **Retail Systems** from **Marlite**

Displawall® 2000 Series Trim Strips, add a 7 in the blank

ColorSnaps, add a 1 in the blank

Displawall 5000 Series Inserts, add an 8 in the blank



6000 Insert (a)



5000 Insert (b)



ColorSnaps (c)



Trim Strips (d)



9202 Bright Silver (a)



9304 Bright Brass (a)



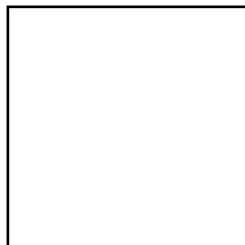
9909 Black Powder (a)



9101 Mill Finish (a)



_906 Ginger Brown (b,c)



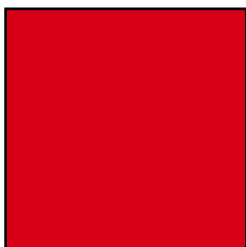
_949 White (b,c,d)



_909 Black (b,c,d)



_912 Storm (b,c,d)



_845 Red (b,c,d)



_315 Platinum (b,c)



_Custom HPL (d)

Custom colors are available. Minimum quantities may apply.

Retail Systems—Marlite Finish Panels

The Exclusive Marlite Finish

The Exclusive Marlite Finish is a richly detailed and easy-to-maintain surface that is more economical than decorative laminates. The base coat, precision coat, print coats and melamine top coat are all applied to a smooth substrate. Each panel is then baked, creating a tough, durable finish.



Marlite Retail Systems

Marlite Retail Systems offer retail merchandising solutions for all segments of the retail industry, from Displawall, Displawall FL, and Displawall dimensions to Visplay Systems from Marlite. We provide a complete package to meet your store programs needs.

Custom Capabilities

Virtually any color and many print patterns can be created using the Marlite finish. Simply submit a sample swatch of the color/print pattern desired, and Marlite will send a lab sample match within a few days. It's quick and easy to create your own Marlite product.

Minimum order quantities and lead times apply.

Veneers

Any real wood veneer can be specified on Marlite Retail Systems panels. A durable clear coat finish or custom stain can be factory applied.

Special Materials

Any natural or synthetic surface which can be applied to an MDF core can be used.

Custom Finishes

A wide variety of woodgrains and abstract patterns can be replicated in any color combination. Custom High Pressure Laminates can be ordered to your specifications from Formica®, Nevamar®, WilsonArt® or any other domestic or foreign laminate manufacturer.



RETAIL SYSTEMS

Finish Guide

Standard Prints

Displawall, Displawall FL, Displawall Dimensions & Visplay from Marlite

(3/4" thick. Other thicknesses available upon request.)

Abstract Series

- 134 Powder
- 192 Laramie (New 2003)
- 193 Rawlins (New 2003)
- 194 Cody (New 2003)
- 198 Meriden (New 2003)
- 425 Terra
 - WilsonArt® 4768-60 Rushmore Boulder
- 426 Shadow
 - WilsonArt® D96-60 Shadow
- 429 Cloud
 - WilsonArt® D327-60 Peppercrust
- 437 Nimbus (New 2003)
- 438 Evening Lark (New 2003)
- 439 Horizon (New 2003)
- 451 Bone
 - Formica® 918-58 Neutral White
- 453 Quarry
 - Formica® 929-58 Oyster Gray
- 454 Flint
- 782 Dapple
 - WilsonArt® 4640-60 Dove Moraine

Mono Color Series

- 415 Frost White
 - WilsonArt® 1573-60 Frosty White
- 418 Dawn Gray
 - Formica® 961 Fog
- 515 Almond
 - Formica® 920 Almond
- 703 Brite White
 - WilsonArt® D-354-60 Designer White
- 764 Crystal Gray
 - WilsonArt® D315-60 Platinum

Woodgrain Series

- 038 Georgetown Anigre ••
- 148 Monticello Anigre ••
- 205 Capistrano Cherry
- 310 Sierra Maple
 - WilsonArt® 7909-6 Fusion Maple
- 317 Alum Rock Maple
 - Pionite® WX041-S Anigre
- 318 Windsor Anigre
 - Formica® 744 Lacewood
- 319 Whittier Anigre
 - WilsonArt® 7062-60 Congo Spruce
- 342 Champagne Maple
 - Pionite® WM791-S Hard Rock Maple

Specialty Finishes

- 020 Red Oak Veneer
- 041 White Birch Veneer
- 082 White Maple Veneer
- 601 Clear Mirrored Acrylic
- 692 Fine Oak LPM
- 707 Rock Maple LPM
- 711 Linn Birch LPM
- 738 Brushed Aluminum LPM
- 742 Tornado Gray LPM
 - Formica® 462-58 Contract Grey
- 744 Swiss Almond LPM
 - Formica® 920-58 Almond
- 750 Goshen White LPM
 - Pionite® SW826-5 Angel White
- 751 Stone Gray LPM
 - Formica® 927-58 Folkstone
- 757 Trojan Black LPM
 - Formica® 909-58 Black
- 001 Paint Grade
- 101 Primed

Select Wood Veneers (Extended lead times apply)

- 256 Quartered Figured Anigre
- 263 Quartered Wenge
- 265 Quartered Tigerwood
- 299 Quartered Steamed Beech

- Harmonized to High Pressure Laminate selection shown
- Grain direction runs vertically on 4' wide x 8' high panel

ORDERING INFORMATION

Displawall 2000 Series, add a 2 in the blank

Displawall 5000 Series, add a 5 in the blank

Displawall 6000 Series, add a 6 in the blank

Displawall FL, add a SDFL (Standard) in the blank

Displawall FL Plus, add a HDFL (Heavy Duty) in the blank

Visplay Series, add a VS in the blank

All grain patterns on Displawall and Displawall FL run the 8' dimension, except where noted. All grain patterns on Displawall Dimensions per specifications.

MARLITE DISPLAWALL & DISPLAWALL FL INSERTS

Groove Treatments/Reinforcements

5000 Series Rigid Vinyl Inserts, Trim Strips, ColorSnaps™

U.S. Patent #4,615,448

- __ 315 Platinum
- __ 845 Red
- __ 906 Ginger Brown
- __ 909 Black
- __ 912 Storm
- __ 949 White
- Custom HPL Trim Strips

6000 Series Aluminum Inserts

U.S. Patent #4,615,448

- 9101 Mill Finish
- 9202 Bright Silver Anodized
- 9304 Bright Brass Anodized
- 9909 Black Powder Coat
- Custom Colors Available

Displawall FL Plus

Patent Pending

- FLC-10 Mill
- FLC-25 Black Powder

GROOVE TREATMENT ORDERING INFORMATION

Standard 2000 Series Displawall panels have grooves painted to match surface (4' x 8' 3" O.C. panels only).

Grooves can be painted in contrasting or harmonizing colors upon request.

ColorSnaps, add a 1 in the blank.

5000 Series Displawall panels require factory-installed rigid vinyl inserts.

6000 Series Displawall panels require factory-installed aluminum inserts.

Displawall FL Plus Series Panels require factory-installed aluminum inserts.

ColorSnaps and Trim Strips can be installed in the field.

Displawall 5000 Series Inserts, add an 8 in the blank

Displawall 2000 Series Trim Strips, add a 7 in the blank.

